




EMS

JOINT EFFORTS FOR THE INTEGRITY OF CREATION

ANNUAL REPORT 2023



Evangelische Mission
in Solidarität



*Protecting and sustaining the rainforests in Sulawesi –
that is the aim of the project “One Family, One Tree”.*

CONTENTS

3	GENERAL SECRETARY'S REPORT
6	NEWS FROM THE PROJECTS
8	FINANCIAL REPORT
11	ANNUAL REVIEW
14	SPECIAL FEATURE: MIDDLE EAST
16	THE WORLD OF THE EMS

*Cover photo: Participant in an agricultural project of the
Protestant Indonesian Church in Luwu (GPIL).*

EVANGELICAL MISSION IN SOLIDARITY (EMS)

25 churches and five mission societies from Africa, Asia, Europe and the Middle East form an equal partnership network. Founded in Stuttgart in 1972, the Christian community shares resources, makes joint decisions on projects and programmes, and learns from and with each other.

Dear Reader,

The photo you see on the left side shows very clearly what “Integrity of the Creation” means: two young women are sitting together with the pastor’s family enjoying a picnic on the church grounds, contemplating how they can encourage families in the community to plant trees. Soraya Astiananta and Yuniarsi who are members of the Christian Church of West Sulawesi have called their project “One Family, One Tree”. The aim of the two theology students is to explain to families in their congregation why it is important to protect and preserve the rainforests in Sulawesi. A practical solution is for each family from the local Bambu community to plant a tree – actually two trees: one on the church grounds and one at home.

ONE FAMILY, ONE TREE

The “One Family, One Tree” project is part of an “Advocacy” training course on environmental issues which both Soraya and Yuniarsi have attended. Over the six months that the course lasted, they learned how to harness local resources to do something for the environment. This “Advocacy” course was itself part of the EMS focal topic “Integrity of the Creation”. In 2019, the EMS churches had already set themselves the goal of placing the integrity of God’s creation at the centre of their joint activities. However, first came Covid-19 and then the 50th Anniversary of the EMS, which meant that the focus of activities had to be postponed until 2023 year.

MISSION AND INTEGRITY OF CREATION

“Why do you do environmental projects? I thought you were a mission society!” This is what an entrepreneur once asked when I started at the EMS. There are several reasons for this. Firstly, the EMS Constitution states that a holistic understanding of mission also includes working for justice, peace and the integrity of God’s creation. Secondly, climate change, deforestation and the misuse of natural resources are already having a massive impact on the lives of people in EMS member churches, particularly in Africa and Asia.

DIVERSITY OF PROJECT WORK

Last year saw the start of several creation projects by the Evangelical Mission in Solidarity (EMS).

- Joint drafting of Eco-Theological Guidelines for the EMS churches
- A worldwide Bible reading project on creation passages:
- “Reading the Bible through the eyes of another”
- EMASplus sustainability certification at the EMS
- The energetic refurbishment of the Secretariat by the Foundation of the Basel Mission - German Branch
- A revision of all EMS policies based on sustainability aspects
- Advocacy training programme on environmental issues
- Funding for ecological projects, e.g. in Indonesia
- Support for environmental education in schools, e.g. in India and China
- Funding for an innovation centre for ecological businesses in Indonesia

RESPECT AND REVERENCE FOR LIFE

In the Eco-Theological Guidelines drafted by all the EMS members last year, the churches jointly formulated the following: "Embrace a theology of stewardship: Stewardship entails recognizing that humans have been entrusted with the care of the Earth and its resources (Gen 2:15). It involves responsibly managing and protecting the environment, ensuring that future generations can also enjoy its benefits. ... We will therefore protect God's creation and work towards justice for all creatures." (Eco-Theological Guidelines of the EMS)"

"STEWARDSHIP"

"Stewardship" describes the responsibility for a Fellowship entrusted to our care. "Stewardship" could therefore also be the title of many other EMS activities that have moved us over the past year. This includes aid we were able to provide for the victims of the earthquake in Syria and Turkey through our member churches in the Middle East and the students at the Near East School of Theology in Beirut. This includes support for the victims of the war in the Middle East that began with the brutal attack by Hamas in October last year. „Stewardship“ in 2023 also meant supporting over 50 joint projects to the tune of €2.6 million.

The EMS Fellowship thrives on all members making an active contribution to joint activities and projects using their skills and capabilities. This worldwide cooperation on equal terms is still unique in the field of church societies and a distinctive feature of the EMS.

RESILIENCE AND HEALING

The EMS Eco-Theological Guidelines explain why such a joint commitment is an indispensable part of our faith: „Despite the enormity of environmental challenges, embracing a theology of hope and resilience involves maintaining faith in the possibility of positive change. It means believing that through collective action and commitment, we can contribute to healing and restoration of the ecosystems for future generations. Resilience comes from our faith in God who is groaning with us; we rely on God's help towards restore and healing.“

Rev. Dr Dieter Heidtmann
General Secretary

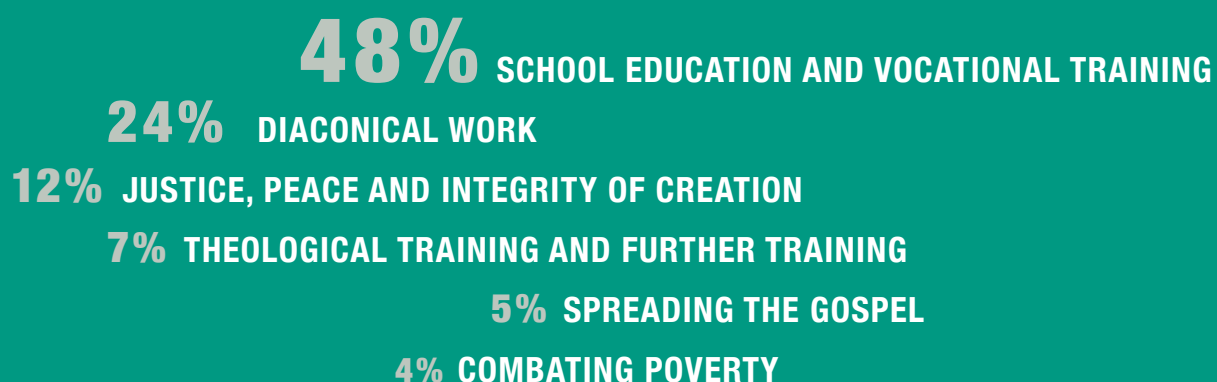


€2,653,795.16

FOR JOINT PROJECTS



PROJECT FUNDING AREAS 2023 *



*The figures refer to the 50 projects in the EMS major project programme and the 29 projects in the Small Project Fund.

SUSTAINABLE FUNDING SOLIDARITY AND COMMITMENT

Last year, the EMS funded a large number of projects and programmes to the tune of over €2.6 million. The international EMS Fellowship is especially committed to the rights of the vulnerable, poor and marginalised. It funds projects to combat poverty and promote human rights and for peace.

"We are at a critical moment in history. The clock is ticking for climate protection. Temperatures are rising. Storms are raging. Harvests are failing. Every single one of us will be affected. If we want a better future for our children and grandchildren, we have to act now."

*Prof. Dr Mathew Koshy Punnackadu,
Director of the Department of Ecological Concerns of the CSI.*



EXAMPLES OF PROJECTS

INDIA

FUNDING AREA: Integrity of Creation

PROJECT PARTNER: Church of South India (CSI)

The Church of South India (CSI) is so far the only church in India which has adopted the protection of the environment as its mission aim in its constitution.

The CSI's programme is especially focussed on its own schools. There, climate change is addressed by an interdisciplinary and action-based syllabus. This teaches students to think in context, develop specific solutions for dealing with climate change and pass them on to others.

Girls and boys first work together to develop a climate-friendly environmental management system for their schools. They examine what options there are for saving water and electricity, recycling waste or keeping the air clean and then they document the results. The children, young adults and teachers also pass on their knowledge to their families and church congregations.

The commitment of the Church of South India to environmental and climate protection was honoured in 2019 by its nomination for the UNESCO Japan Prize on Education for Sustainable Development.

INDONESIA

FUNDING AREA: Integrity of Creation

PROJECT PARTNER: Christian Protestant Church in Bali (GKPB)

In collaboration with the Dhyana Pura University, the Christian Protestant Church in Bali (GKPB) is supporting committed eco-entrepreneurs to develop environmentally friendly products through its project for an innovation centre for ecological businesses. The focus in developing products, processes and programmes is on skills and appreciation for social and ecological concerns.

It all starts with the wish to protect nature and promote sustainability. An idea evolves into a business plan, which is then implemented by starting a company. The business start-ups receive further training so that they can plan and implement green projects on a holistic basis. Expert contacts are always on hand by setting up a network of mentors and trainers. The eco-centre can also draw on a large number of contacts and cooperation partners.



INDONESIA

FUNDING AREA: Combating poverty

PROJECT PARTNER: Protestant Indonesian Church in Luwu (GPIL)

Many people on Sulawesi live in small villages scattered all over the island. Despite the fact that the soil is fertile, they often suffer from poverty. Normally they only own small plots of land, hardly sufficient to support their own families. The Protestant Indonesian Church in Luwu (GPIL) has launched a pig breeding project to support these families. Indonesia has a growing demand for pork since the government is subjecting its import to strict regulations - this means a real opportunity for local breeders.

In 2023, the smallholder families participating in this project were provided with pigs for rearing - and learnt how to keep and raise the animals and recognise diseases at an early stage. They were also given entrepreneurial knowledge. The sale of mature animals increased the families' income and made it possible for their children to attend school. Better education will in turn lead to more income opportunities for the next generation and reduce their dependence on an uncertain source of income – the harvest which is always dependent on the whims of the weather. The project has also made a contribution to sustainable agriculture – pig manure is used as free organic fertiliser or to produce biogas.



You will find all the projects at
www.ems-online.org/en/support



THE YEAR IN FIGURES

FOCUS ON SUSTAINABILITY

At a time of mounting challenges, the EMS is continuing its project work to promote diversity and justice. In so doing, it attaches particular importance to sustainable and ethical behaviour.

We are facing major challenges all over the world. Democracy is under test on a daily basis. Diversity and openness, which are the basis of appreciation and respect for others and otherness, is becoming the target of egalitarians and thinkers of doom and gloom. The powerful rulers of the world's major states are leading the way here. Their policies do not respect freedom and solidarity among people. Instead, they teach dictatorship and are guided by anger and power. It is becoming more and more difficult to counter this by setting clear signals and alternatives and to live by them. New forms of language and the power of social media that have taken over the formation and shaping of public opinion are now accepted to an alarming extent and their truth content is not questioned. Scepticism and critical reflection are dwindling virtues. These developments determine our work but we will have to cope with ever tighter financial constraints in the future. The EMS has continued its project and programme work in 2023 and

beyond. The funds were used for a wide range of initiative projects in the field of education and raising awareness to promote diversity and justice. We are enormously grateful to all donors and supporters who hold this work close to their hearts.

INTEGRITY OF CREATION

One of the greatest challenges of our time is the integrity of creation. It is also one of the major tasks and commitments of our actions as a mission society. The EMS has embarked on a path that not only places value and emphasis on sustainable and ethical action in its projects and programmes, but has also aspired to obtain certification according to EMAS (European Management and Audit Scheme) and EMASplus, obtaining them in March 2024.

The EMS is thus committed to the sustainable development of its members and their commitment to sustainable processes in their own environments. For decades, the EMS has been promoting projects whose objectives are in line with the Sustainable Development Goals (SDGs) defined by the United Nations in 2015. The EMASplus management system allows the EMS to systematically evaluate and continuously optimise its economic, ecological and social impact.

FINANCIAL YEAR 2023

REVENUES

Donations, offerings	1,350,391.58
Contributions from members	4,115,375.04
Project refunds and subsidies	1,079,047.52
Interest, dividends	170,934.59
Rental revenues	124,488.52
Refunds and other revenues	210,350.51
Carried forward result previous year	298.42

€7,050,886.18

EXPENDITURES

Project allocations	2,653,795.16
Allocations to reserves	550,000.00
Staff costs administration	781,331.41
Staff costs programmes	1,979,288.24
Staff costs ecumenical co-workers	54,080.03
Write-offs	21,634.43
Material costs administration	486,532.35
Material costs programmes	519,839.05

€7,046,550.67

Annual surplus

4,385.51

All figures in Euro



The EMS supports the work of the Toraja Church in Sulawesi, Indonesia. The living conditions of the people are sustainably improved through development centres in remote regions.

Sustainability and future planning are systematically integrated into the organisation. Some key sustainability goals have already been achieved, such as the power supply which is now carbon-free, including heating and hot water for the Secretariat in Stuttgart due to the installation of a photovoltaic system and the purchase of green electricity.

By the end of the first certification period in 2028, the EMS aims to make further progress in all three aspects of sustainability - environmental, social and economic. Six sustainability priorities have therefore been defined for this purpose and specific measures for these priorities have been defined. They focus on: a) Sustainability in an international context, b) Climate protection, c) Conservation of resources and circular economy, d) Social sustainability, e) Labour conditions, f) Financial sustainability. Details of the individual measures are provided in the sustainability report on our website.

The EMS can exert an economic influence by investing its assets based on sustainable criteria. The EMS is a member of the Working Group of Church Investors (AKI) and is actively involved in shaping and improving the sustainability criteria for capital investments. Sustainable investments also serve to maintain the economic viability of EMS in the long term.



Members of the EMS sustainability team.



*Read the Sustainability Report
here.*

SUBSTANTIAL INCREASE IN DONATIONS

Contributions from members and in particular the German member churches remained unchanged in 2023 and therefore represent an essential source of funding for the work of the EMS. To a large extent, these funds determine the fields of activity of the EMS and the priorities required on the path to a fairer world and the integrity of God’s creation. As a result, significantly more donations were raised for these tasks, programmes and project measures in 2023 than in the previous year. A further increase in revenues was achieved through re-funds for services and revenue from interest.

At the same time, staff costs did not increase to the extent initially expected, as vacant positions resulted in savings. The improved revenue situation from donations also enabled us to increase funding for our international programme and project work, thus strengthening the sustainability of projects. A large number of projects in recent years have focussed on environmental as well as social and ethical aspects of sustainability. In order to raise awareness for sustainable management in the financial sector, the EMS invited financial officers from its members to a consultation to discuss sustainable investment criteria for financial investments and issues relating to the transparent handling of financial resources.

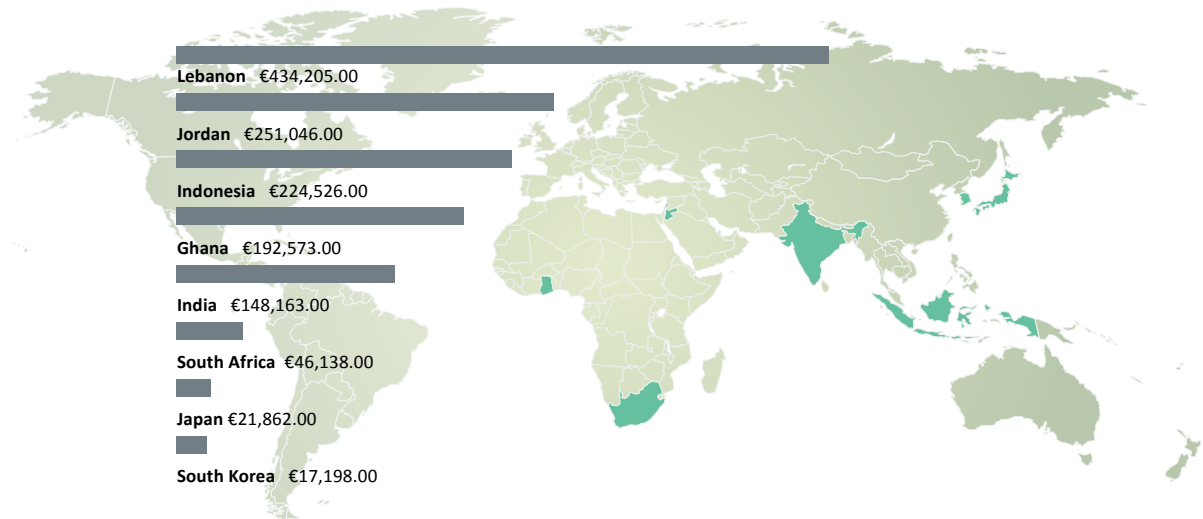
OUTLOOK

In the coming years, the scope and intensity of EMS activities will depend on a number of factors. Costs, in particular staff costs, will rise while staff numbers will remain the same and income will have to be generated increasingly from the donations market. Global developments in politics and society are leading to ever greater challenges for organisations such as the EMS. Revenue for German churches is declining and this is also used to finance contributions to the EMS. Solutions do exist for the societies, such as new collaborations and closer cooperation between mission societies in Germany to achieve high synergy effects. Programme areas that are carried out nationwide by the societies, as well as cooperation with particular countries, can provide enough leeway to ensure ecumenical cooperation. This is a calling card of the churches that needs to be expanded and strengthened rather than restricted in times of financial and political difficulties. Now is the time to send out a clear signal. This calls for the leaders in our churches and societies to chart the right course at the right time. The EMS has already started.

Rudolf Bausch
General Manager



EMS PROJECT FUNDING BY COUNTRY*



*The figures refer to the 51 projects adopted by the EMS bodies for 2023.

PEOPLE AND EVENTS

THE EMS YEAR 2023 IN HIGHLIGHTS

SOUTH AFRICA: SOLAR SYSTEM FOR ELIM HOME

Elim Home in South Africa has provided a home for 50 children and young adults with severe mental and physical disabilities for over 60 years. There they are lovingly looked after and cared for depending on their abilities. It was thanks to financial support also donated by the EMS that a photovoltaic system was installed on the roof of the Elim Home in 2023. It now makes the home independent of the unreliable power supply that is often cut off for up to ten hours a day. At the same time, the photovoltaic system helps to reduce the rising costs of electricity.

ADVOCACY TRAINING FOR ENVIRONMENTAL TEAMS

The EMS offered Advocacy training from October 2023 to April 2024 as part of its „Green Ambassadors“ programme. Ten environmental teams from Germany, Ghana, India and Indonesia took part. The training programme focused on learning how to harness local resources for environmental work. As part of the training programme, the groups developed and conducted their own environmental projects: e.g. a rainforest reforestation project in Indonesia, cleaning a beach in Ghana and avoiding electronic waste in India. The „One Family, One Tree“ project was also developed as part of the Advocacy training programme. Advocacy training was conducted jointly with the Asian Rural Institute (ARI) in Japan, the Presbyterian Church of Ghana (PCG) and the Evangelical Lutheran Church in Baden (EKIBA). Due to high demand, the programme will be repeated. The aim is to develop a „Train the Trainer“ programme which will enable participants to pass on their experience to local groups.



LESS CO₂ THROUGH BIOCHAR

In 2023, the EMS organised a training project on the production of biochar together with the local leaders of the partner churches in Sulawesi and Bali. Local farmers were trained to produce organic charcoal in an environmentally friendly combustion process that emits 50% less CO₂. They were also trained on how to maintain and restore nutrient-rich soil by using biochar. In future, farmers who have taken part in the training will be trainers in their own community. The members of the training group are organised as an organic farmers' network within the EMS member churches in Indonesia.

MISSION COUNCIL IN KASSEL

The International Mission Council of the EMS met in Kassel in June 2023. The meeting was hosted by the Protestant Church in Kurhessen-Waldeck (EKKW). The discussions mainly focused on the EMS sustainability strategy. Two working groups were set up: an environmental one, which was tasked with developing eco-theological guidelines for the EMS Fellowship, and another to review all the existing policy documents of the EMS. As a result, all areas of EMS work were closely scrutinised for their environmental, social and financial sustainability.

During the meeting, the delegates also met with the Bishop of the EKKW, Prof Dr Beate Hofmann. The meeting took place at the “Neue Brüdergemeinde” in Kassel (New Brethren Church). The congregation provides a home for the Ethiopian Orthodox congregation, an African cooperative congregation and the Kurhessian congregation.



INTERNATIONAL EMS CHILDREN'S PROGRAMME

The staff concept for the children's programme YOU + ME: FRIENDS AROUND THE WORLD has proven to be an enormous success. Working with children was again organised internationally in 2023. Annette Schumm and Anna Kallenberger are in charge of the children's programme at the Secretariat in Stuttgart, while Rev. Gustina Saruran from Indonesia represents the EMS with workshops dedicated to children in all Indonesian member churches. They are currently working together on a workbook on the theme of creation, which will be published in 2024.

MUSIC TO PROMOTE UNDERSTANDING AMONG NATIONS

During a choir tour organised by the Basel Mission - German Branch (BMDZ) in August 2023, 30 young people from the Esslingen Youth Choir enjoyed a fantastic experience in India. The tour took them to the south of the country and to Delhi. Everywhere they went, they were warmly welcomed by the

host parishes of the partner church CSI. As they mostly travelled in areas that saw few tourists, they attracted a lot of attention even without singing. The Indian musicians were given new inspiration and the guests returned home knowing more about the foreign country, its culture and its people. And to top it all - companionship within the choir really worked well and everyone thoroughly enjoyed it.

INDONESIAN REGIONAL FORUM

Delegates from the Indonesian EMS member churches and co-operation partners, such as the Communion of Churches in South-East Sulawesi (PGIW Sulsebar) and the STT INTIM University, gathered at the 2023 Regional Forum that took place from 5 - 8 October 2023 in Denpasar. EMS General Secretary Rev. Dr Dieter Heidtmann and Head of Unit Indonesia Rev. Djoko Wibowo also took part in the discussions. The Communion has undertaken a voluntary commitment to implement sustainable agricultural projects. The aim is the economic development of local communities.



TRIP TO INDONESIA BY THE GENERAL SECRETARY

EMS General Secretary Rev. Dr Dieter Heidtmann and Head of Unit Indonesia Djoko Wibowo paid an official visit to several Indonesian member churches (27.9.-9.10.2023): the GKPB in Denpasar, the GPIL in Palopo-Masamba, the GPID in Palu-



ECUMENICAL YOUTH VOLUNTEERS PROGRAMME

Volunteers from Germany must apply by 31 October each year.

Departure takes place in the summer of the following year. For further information on the application procedure, go to: www.ems-online.org/oefp

SOUTH-NORTH EXCHANGE

The Ecumenical Youth Volunteer Programme (ÖFP) collaborated with the 'weltwärts' programme on the South-North exchange for the first time in 2023. This was the first time that the EYVP was able to offer a volunteer service in Germany for a whole year. Volunteers from South Africa and Indonesia have benefited greatly from support provided by the 'weltwärts*' programme and the extended duration. German volunteers have received support from by the 'weltwärts' programme since 2008. Volunteers from South Africa and Indonesia have performed voluntary service at various placement centres in Germany. The placement locations included the Schillerstrasse Family Education Centre in Heilbronn, the Christian Youth Village in Offenburg and the Himmelsfels Youth Meeting Centre. Experience reports from the volunteers from the south can be found on our Facebook page:

www.facebook.com/missioninsolidarity

Volunteers from Germany completed their voluntary service in India, Ghana, Indonesia, Jordan and Japan in 2023/24. Detailed reports are available to read on the EYVP blog page:

<https://oefp-blogs.ems-online.org/>

Donggala, the GTM in Mamasa and the GKSS in Makassar. Alongside sustainable agricultural projects to improve the living conditions of the communities, they visited the Banua Mamasa Hospital and children's homes in the region.

INDO-KOREAN MISSION COUNCIL

EMS General Secretary Rev. Dr Dieter Heidtmann and Head of Units India and East Asia Rev. Solomon Benjamin attended the Indo-Korean Mission Council (19-21 April 2023) as part of their official trip to South Korea and Japan. The Council includes several churches in Asia, including four EMS member churches: the Presbyterian Church in the Republic of Korea (PROK), the Presbyterian Church of Korea (PCK), the Church of North India (CNI) and the Church of South India (CSI).

The 'Integrity of the Creation' was a central theme of the conference. EMS General Secretary Dr Heidtmann called on the churches to take concrete action. In his address, he referred to the appeal made during the EMS Theological Youth Conference (2021): "We call upon the churches to take all possible measures to protect the environment and slow down climate change. Protecting the environment [...] is an example of how we can only overcome global challenges acting together. We need a new global culture of solidarity. Here, "Mission in Solidarity" is needed more than ever.



MIDDLE EAST

A YEAR FULL OF CHALLENGES

The crises and disasters that occurred in 2023 took an immense toll on EMS member churches in the Middle East.

First the earthquake in Turkey and Syria that claimed over 62,000 lives and more than 125,000 injured. The Episcopal Diocese of Jerusalem quickly organised a large consignment of relief supplies which were packed in the Anglican parishes in Jordan and transported to the Syrian earthquake zone by truck convoy through the intermediary of humanitarian organisations in the region. It also directly affected students studying at the Near East School of Theology (NEST) in Beirut who come from Syria themselves. Some students who had been sent to the NEST as part of the EMS programme “Studies in the Middle East” (SiMO) joined forces with their fellow Syrian students and procured baby food and hygiene products in Lebanon to send to the most severely affected families in Syria.

The international EMS Fellowship was able to support the Episcopal Church’s humanitarian aid with a sum of €210,000; and around €10,000 in donations were channelled by the EMS to the direct aid organised by the students.

The relief efforts for Syria were nowhere near over when the most far-reaching catastrophe in decades flared up in the Middle East. On 7 October 2023, the terrorist organisation Hamas launched an attack on several Israeli towns around the Gaza Strip, massacring, murdering, raping, kidnapping and pillaging the civilian population there. As a result, the Israeli army marched into the Gaza Strip. Almost the entire infrastructure of the Palestinian coastal region was destroyed during the course of the war; tens of thousands of people were killed and hundreds of thousands were wounded, traumatised and left homeless. The Ahli Arab Hospital of the Episcopal Diocese of Jerusalem was also directly hit by two missile strikes but nevertheless managed to continue providing its medical services to the victims of this violence for several months. By the end of 2023, the international EMS Fellowship had funded this work to the tune of over €40,000, almost half of which was donated by the Presbyterian Church of Korea alone.

But then the war spread even further. Continuous skirmishes between the Israeli army and the Lebanese Hezbollah militia turned Lebanon, which was already suffering from severe economic and political difficulties, into a military danger zone. After travel warnings and requests were issued to leave the country, the SiMO study programme at the NEST had to be cancelled. Through the mediation of „Brot für die Welt“ (Bread for the World), the five SiMO students at the NEST were

able to continue their studies in Romania. Apart from other concerns at the Johann Ludwig Schneller School (JLSS) in the Lebanese Bekaa Valley, missile strikes in the nearby vicinity were now added to the mix.

Is it even possible to continue working on sustainable projects under such conditions? Yes, you most certainly can! With substantial funding by the Evangelical Lutheran Church in Württemberg, work was started on transforming the National Protestant College (NPC) in Kfarshima, an excellent educational institution run by the NECB (National Evangelical Church of Beirut), into an environmentally sustainable facility. This included a photovoltaic system and a refurbishment to improve the energy efficiency of the building. These measures were made necessary as a result of financial hardship alone - otherwise the NECB would no longer have been able to run the school. A new electrical workshop was built at the JLSS and they are even preparing to introduce a training course in electromobility. Everything needed for the complete refurbishment of the boarding home at the Theodor Schneller School (TSS) in Jordan has also been organised so that work can commence in 2024. The Evangelical Association for the Schneller Schools (EVS) together with the Evangelical Lutheran Church in Württemberg have so far funded this project to a total of €700,000. All those involved - including children and educators living at the boarding home - participated in planning workshops from the very start to ensure the sustainability of the project.

After all, what could be more sustainable than to awaken a “longing for the sublime” in people? This actually happened when the Evangelical congregation in Wendlingen donated its 17-stop organ which they no longer needed. The organ was then shipped to Jordan as part of an EVS project and reassembled in the TSS church there. Work on the project continued throughout the hot summer of 2023 until the organ finally resounded for the first time in its new location in November. It was a completely crazy project, without a doubt. But when this organ now plays to the glory of God, it transcends far beyond all the concerns and disasters we are currently facing. And it also shows that there really is hope!

Dr Uwe Gräbe

Head of Unit Middle East, Executive Secretary EVS



The aid campaign for earthquake victims in northern Syria was initiated by students Anna Kierdorf and Antonia Kura.



New photovoltaic system at the National Protestant College (NPC) in Kfarshima, Lebanon.



Reassembling the organ in the church at the Theodor Schneller School.



AFRICA

- 1 GHANA: Presbyterian Church of Ghana (PCG)
- 2 SOUTH AFRICA: Moravian Church in South Africa (MCSA)

MIDDLE EAST

- 3 JERUSALEM AND THE MIDDLE EAST:
The Episcopal Church in Jerusalem and the Middle East
- 4 LEBANON: National Evangelical Church in Beirut (NECB)

ASIA

- 5 INDIA: Church of South India (CSI)
Church of North India (CNI)
- 6 INDONESIA: Evangelical Christian Church in Halmahera (GMIH)
Evangelical Christian Church in Minahasa (GMIM)
Christian Church in South Sulawesi (GKSS)
Christian Church in West Sulawesi (GKSB)
Christian Protestant Church in Bali (GKPB)
Protestant Indonesian Church in Donggala (GPID)
Protestant Indonesian Church in Luwu (GPIL)
Protestant Church in South-East Sulawesi (GEPSULTRA)
Toraja Church (GT)
Toraja Mamasa Church (GTM)
- 7 JAPAN: United Church of Christ in Japan (KYODAN)
- 8 KOREA: Presbyterian Church in the Republic of Korea (PROK)
Presbyterian Church of Korea (PROK)

EUROPA

- 9 GERMANY:
Basel Mission - German Branch (BMDZ)
German East Asia Mission (DOAM)
Moravian Church (European Continental Province)
Protestant Church of the Palatinate (EKP)
Protestant Church in Hesse and Nassau (EKHN)
Evangelical Church of Kurhessen-Waldeck (EKKW)
Protestant Church in Baden (EKIBA)
Evangelical Lutheran Church in Wuerttemberg (ELK-WUE)
Evangelical Association for the Schneller Schools (EVS)
Moravian Mission Society (HMH)
- 10 SWITZERLAND: Basel Mission (BM)

COLLABORATIONS

- 11 CHINA: China Christian Council (CCC), Amity Foundation

THROUGH BMDZ AND BASEL MISSION

- 12 CHINA, HONG KONG: Tsung Tsin Mission (TTM)
- 13 CAMEROON: Presbyterian Church in Cameroon (PCC)
- 14 MALAYSIA: Basel Christian Church of Malaysia (BCCM)
Protestant Church in Sabah (PCS)
- 15 NIGERIA: Church of the Brethren in Nigeria (EYN)
- 16 SOUTH SUDAN: Presbyterian Church of South Sudan (PCOSS)

www.ems-online.org

www.facebook.com/missioninsolidarity

EVANGELICAL MISSION IN SOLIDARITY (EMS)

Vogelsangstr. 62 | 70197 Stuttgart
Tel: + 49 711 636 78 -0
Email: info@ems-online.org
www.ems-online.org

Donation account: EMS

Evangelische Bank eG
IBAN DE85 5206 0410 0000 0001 24
BIC GENODEF1EK1

donate online at:

ems-online.org/en/support

IMPRINT: Publishers: Evangelische Mission in Solidarität (EMS)

Editors: Dr. Dieter Heidtmann (V.i.S.d.P.), Benjamin Helmschrott, Stefan Schaal //
Layout: büro für visuelles, Stuttgart // Printers: MHD Druck und Service GmbH,
Harmstr. 6, 29320 Hermannsburg // October 2024

PICTURE CREDITS: Cover: EMS/Heidtmann // p 2: private // p 4: Ralf Stieber //

p 5: CSI // p 6: EMS/Lohnes, CSI // p 7: EMS/Heidtmann (2) // p 9: EMS/Heiligers, EMS //
p 10: büro für visuelles/istockphoto, EMS/Lohnes // p 11: GMIH // p 12: EMS/Kallenberger,
EMS/Wibowo // p 13: EMS/ÖFP // p 14: Pixabay IrinaUzv // p 15: private, EMS/Gräbe, Walcker //
p 16: büro für visuelles/istockphoto